

# STT TECHNICAL DATA



## UNDER REALISTIC CONDITIONS AT THE AIRPORT:

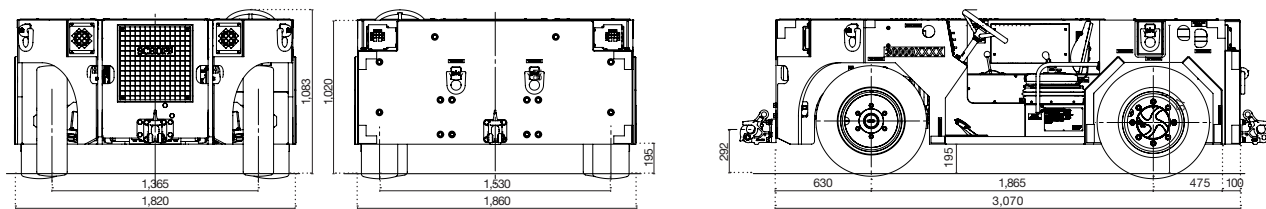
- + Approved for military requirements of the US Navy, especially on aircraft carriers
- + Designed for tough operational conditions
- + Very good overview due to compact design
- + Ideal for small aircrafts and helicopters

OPERATION WEIGHTS	+ 9t   10t
MTOW MAX.	+ 60t
DRAWBAR PULL INSTALLED	+ 68 kN
NSN	+ 4920-12-3913-290



FIND OUT MORE  
STT

MADE FOR YOUR MISSION



## Deutz TD 2011 L04

EU STAGE IIIA

US EPA Tier III



### ENGINES

- + Water-cooled
- + Turbo-charged, 4-cylinders
- + 68 kW



### TURNING RADIUS

- + 3.380 mm (Ø 6.760 mm)

### TRANSMISSION

- + 5 forward/1 reverse gear
- + ZF 6HP-19

### AXLES

- + Front steering axle, Paillard
- + Rear axle rigidly mounted, Dana

### STEERING SYSTEM

- + Hydraulic steering on front axle
- + Left hand drive

### TIRES

- + Front 7.00 R15
- + Rear 250/70 R15 (Continental RV20)

### BRAKES

- + dry disk brakes on front axle
- + 2-circuit failsafe parking/emergency brake on rear axle
- + integrated wet disk brakes on rear axle

### HYDRAULIC SYSTEM

- + for steering and braking (1 circuit, priority for steering)

### ELECTRIC SYSTEM

- + System 24 V DC with fuse protection
- + Battery capacity 2x12 V/88 Ah

### CABIN

- + open cab, low entry approx. 250mm



### OPTIONS EXAMPLES

- + Night vision lights upon request
- + Ballast plate at the rear to extend the units capabilities
- + Additional platform in the rear end for MSU (Mobile Start Unit)
- + Additional features upon request

#### GOLDHOFER AKTIENGESELLSCHAFT

Donaustrasse 95, 87700 Memmingen/Germany  
Web: www.goldhofer.com, E-Mail: info@goldhofer.com

#### SALES

Telephone: +49 8331 15-343  
E-Mail: sales-defense@goldhofer.com

#### SERVICE AND SPARE PARTS

Telephone: +49 8331 962 99 99, Fax: +49 8331 15-247  
E-Mail: service-airporttechnology@goldhofer.com

**MADE FOR YOUR MISSION**